

Week 16, 2020

[Click here to read the letter in your browser](#)

The Bolin Centre is a multi-disciplinary consortium of over 350 scientists in Sweden that conducts research and graduate education related to the Earth's climate.



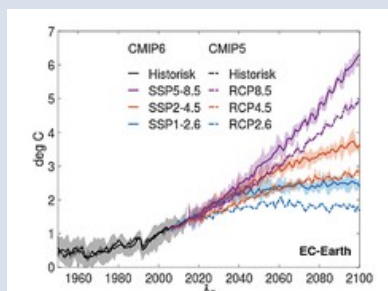
News from the Database

The Bolin Centre Database is a storage and management facility for data collected and collated at the Bolin Centre for Climate Research. Most of the data are available with open access and can be used under the terms given in the data description. Our goal is to host all datasets produced within the Bolin Centre, to visualise the data and make the data publicly available. We now have six new datasets in the Bolin Centre Database:

- John Prytherch, Michael Tjernström (2020). Micrometeorological data from icebreaker Oden's foremast during the Arctic Ocean 2018 expedition. Dataset version 3.0. Bolin Centre Database. <https://doi.org/10.17043/ao2018-micromet-oden-3>
- John Prytherch, Michael Tjernström, Ian Brooks (2020). Micrometeorological data from icebreaker Oden's foremast during the Arctic Ocean 2016 expedition. Dataset version 3.0. Bolin Centre Database. <https://doi.org/10.17043/ao2016-micromet-oden-3>
- John Prytherch, Michael Tjernström, Ian Brooks (2020). Micrometeorological data from icebreaker Oden's foremast during the SWERUS-C3 Arctic Ocean expedition in 2014. Dataset version 5.0. Bolin Centre Database. <https://doi.org/10.17043/swerus-2014-micromet-oden-5>
- Brett Thornton, Kristian Andersson, Patrick Crill (2020). Atmospheric methane and carbon dioxide from the SWERUS-C3 Arctic Ocean expedition in 2014, leg 2. Dataset version 1.0. Bolin Centre Database. <https://doi.org/10.17043/swerus-2014-ghg>
- Brett Thornton, Kristian Andersson, Patrick Crill (2020). Carbon isotope ratio ($\delta^{13}\text{C}$) in atmospheric methane from the SWERUS-C3 Arctic Ocean expedition in 2014. Dataset version 1.0. Bolin Centre Database. <https://doi.org/10.17043/swerus-2014-d13c>
- Nina Kirchner, Jakob Kuttenkeuler, Gunhild Rosqvist, Marnie Hancke, Annika Granebeck, Jan Weckström, Kaarina Weckström, Frederik Schenk, Atte Korhola, Pia Eriksson (2020). Water temperatures from the arctic-alpine Lake Tarfala, Northern Sweden, 2016–2019. Dataset version 1.0. Bolin Centre Database. <https://doi.org/10.17043/kirchner-2020>

Contribute with your data

Welcome to submit your data to the Bolin Centre Database! It is easy, just fill in [the Data Entry Form](#) and we will get in contact with you.



SMHI | New insights into why new global climate projections show faster warming

Last year, the SMHI Rossby Centre presented its first future climate projections using the new version of the global climate model EC-Earth. The new results showed warming taking place at a faster rate than suggested by previous calculations, but the reasons behind it were not fully understood. A [new study](#) explains some of the causes.

BOLIN CENTRE EVENTS

11

MAY

Bert Bolin Science Seminar 2020

Titel: Uncertainty estimation in weather and climate

Speaker: Professor Roberto Buizza, Scuola Superiore Sant'Anna, Pisa, Italy

Time & place: May 11 at 10h00–11h00, Webinar via Zoom, link will be provided soon

[Abstract »](#)

11

MAY

Bert Bolin Climate Lecture 2020

Titel: Climate change: How can we motivate transformation?

Speaker: Professor Roberto Buizza, Scuola Superiore Sant'Anna, Pisa, Italy

Time & place: May 11 at 13h00–14h00. Webinar via Zoom

[Abstract and registration »](#)

11-15

MAY

In Swedish | Digital Klimatfestival

Virtuella rundvandringar, cybermöten med forskare, digitala aktiviteter och livessända föreläsningar. Det är en del av innehållet när årets Klimatfestival blir digital. Liksom de flesta andra stora evenemang, tvingas Klimatfestivalen i år att tänka om rejält, men istället för att ställa in, väljer vi att göra hela arrangemanget digitalt.

[Läs mer»](#)

25-26

NOV

Bolin Days

Welcome to this year's Bolin Days. If you are interested in Climate and the Earth Sciences, you are welcome to join us. We offer an interesting scientific programme and lots of fun social events.

OTHER NEWS AND EVENTS

In Swedish | Nationella expertrådet för klimatanpassning

På uppdrag av det Nationella expertrådet för klimatanpassning genomför dess sekretariat vid SMHI en studie för att kartlägga kunskap om klimatanpassning. SMHI önskar att forskningsprojekt/grupper eller individuella forskare svarar på [enkäten](#).

Syftet med denna kunskapsinventering är att identifiera relevant publicerat material såsom myndighetsrapporter, vetenskapliga artiklar samt rapporter från bransch- och intresseorganisationer med bäring på olika aspekter av klimatanpassning. Material som samlas in kommer att användas som underlag till den rapport som expertrådet ska lämna till regeringen i december 2021. Rådets rapport kommer i sin tur att ligga till grund för regeringens revidering av den svenska klimatanpassningsstrategin.

The **Bolin Centre Weekly News** provides you with a selection of our current activities and latest news and is sent to all members of the Bolin Centre. If you have suggestions that you would like to include in coming Weekly News, you are welcome to send these to bolin@su.se.

Editor: Annika Granebeck
Foto: Martin Jakobsson, SMHI

Stay updated

Find news and upcoming events at bolin.su.se and follow us on [Twitter](#), [Facebook](#) and [YouTube](#).

